

OPTi Installation Guide

DO NOT PLUG THE HARDWARE INTO THE COMPUTER UNTIL YOU HAVE FIRST LOADED THE SOFTWARE!

Congratulations on your purchase of Ash Technologies' OPTi. This document should guide you through the installation of the software and hardware onto your computer.

OPTi has some minimum requirements in order to operate:

- Windows XP Pro or Home editions with Service Pack 2
- Processor:
 - Intel Pentium IV 1.6GHz or greater (recommended)
 - or
 - AMD AthlonXP 2400 or greater
- 480Mb of system RAM minimum
- 64Mb of video RAM; 128Mb recommended
- Computer must have USB 2.0 capability
- 10Mb free disk space

Software Installation

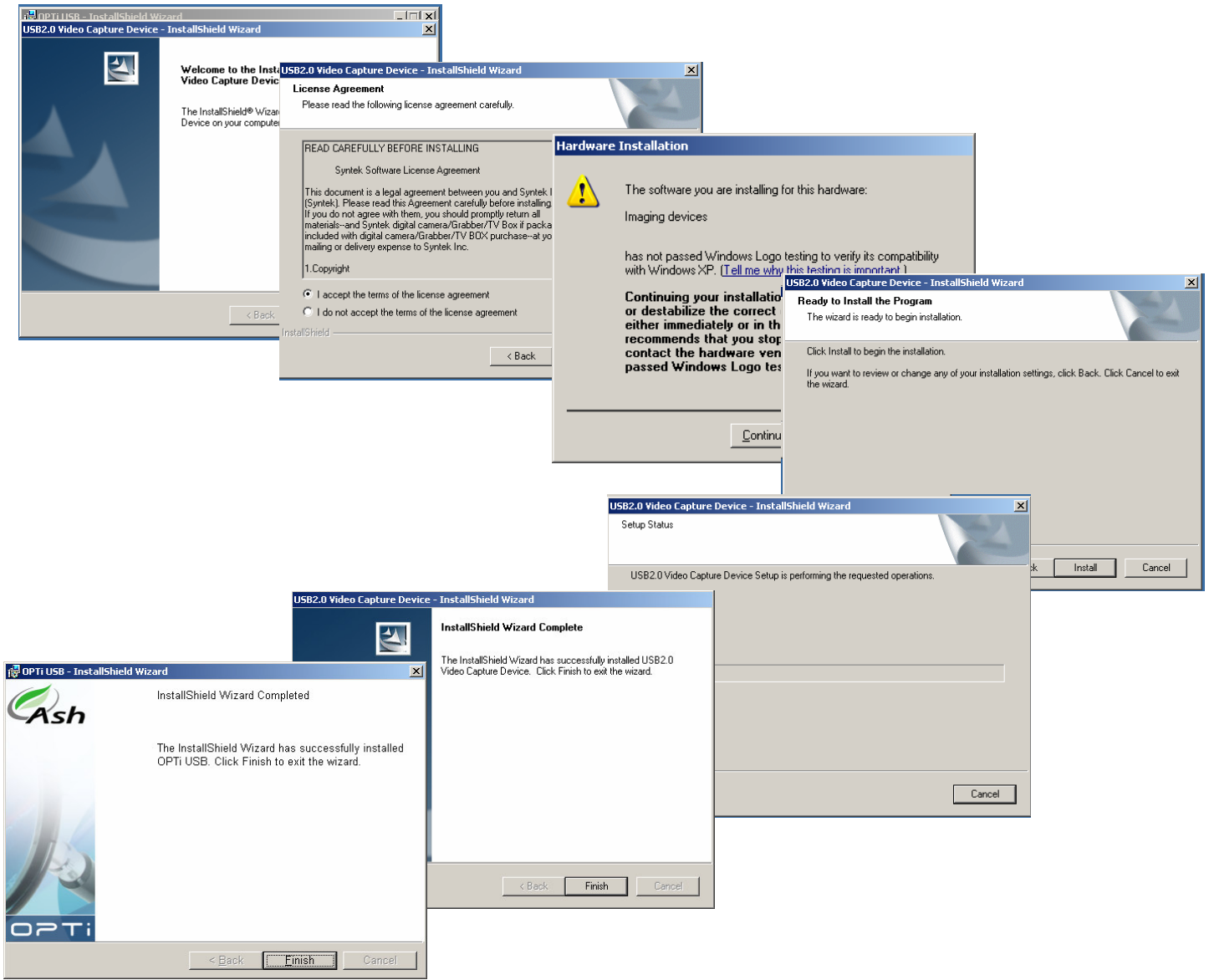
To install the software, insert the CD into the drive and it should autorun. If you have disabled autorun, then run the setup.exe file on the CD.

The installation is fairly standard. A welcome screen appears followed by the license agreement. The User details are requested in a subsequent screen. The serial number should be a valid number or the installation will not proceed. You will be

prompted to change the install directory if required, then the installation begins.



The installation program will now install the USB2.0 Video Capture Device driver. This involves a different license agreement. **NOTE** the device drivers have not passed Windows Logo testing and during the installation you must acknowledge this by clicking “**Continue Anyway**” when prompted.



Now the software installation process is complete and you should have a shortcut to OPTi on the desktop.



YOU MUST NOW RESTART YOUR PC BEFORE CONTINUING!

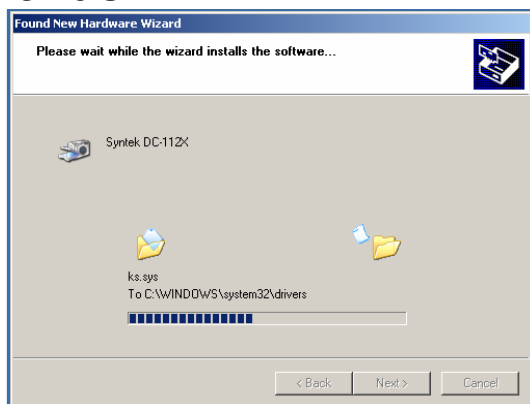
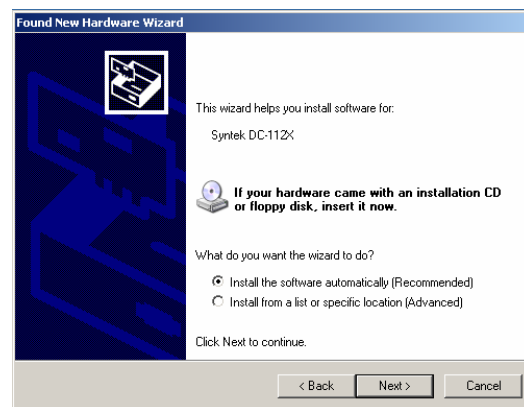
Hardware Installation.

Now you should plug in the OPTi hardware. When you do this Windows will detect the OPTi hardware and will display some popup messages on the screen and then automatically begin to load the drivers that you have just installed.



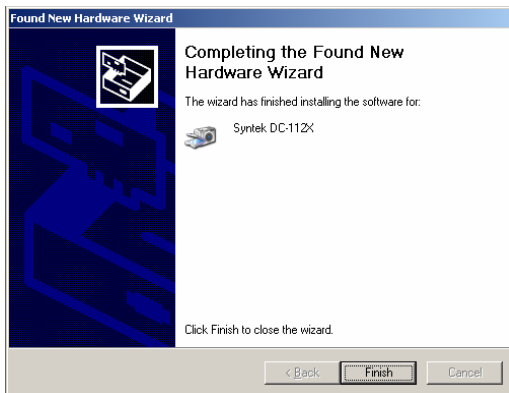
The "Found New Hardware Wizard" will now run. To proceed click the 'No, not at this time' option in the first screen and then click Next to continue.

The next window that appears prompts you to either let the computer find the software – recommended option, or to install from a specific location. Select the option shown below and then click next to continue.



The device drivers will then begin loading.

NOTE: At this point you will see a warning from Microsoft saying that the driver software you are about to install is not Windows Logo tested. It prompts you to Continue the installation or to Stop the Installation. You can safely ignore this warning and **continue** with the install. This is not a problem of any sort.



Once the first set of drivers are loaded, the following window will appear. Just click Finish to proceed.

The process will repeat with the second set of device drivers for the “Video Enhancement Device”. Simply repeat the instructions above.

After about 20 seconds – depending on the speed of your PC, the following message will appear. That’s it. OPTi is now installed and ready to use.

