

OPTi

Installation guide for Windows Vista

Ash
Vision for living

Important

Do not connect the OPTi to your computer until you have installed the software.

Before you begin

Congratulations on your purchase of the Ash Technologies OPTi. This guide is intended to aid you in the installation of the OPTi software onto your PC or Laptop.

The OPTi product is only compatible with the following operating system and hardware:

- Windows Vista
- Intel Celeron 2.0GHz (absolute minimum);
- AMD AthlonXP 2400 or better;
- Intel Pentium IV 1.6GHz or better;
- 1GB of RAM minimum
- At least 32MB of Video RAM (64MB recommended)
- Motherboard must be USB 2.0 capable. OPTi is not compatible with USB 1.1
- 10MB of free disk space

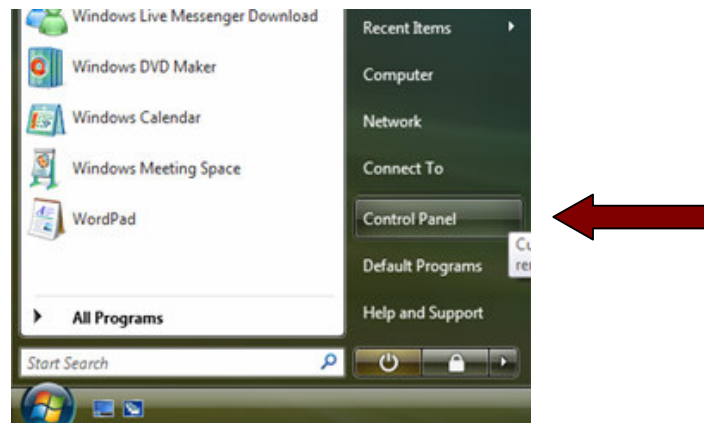
If your computer does not meet these requirements then the OPTi will not function.

Important: Disable UAC

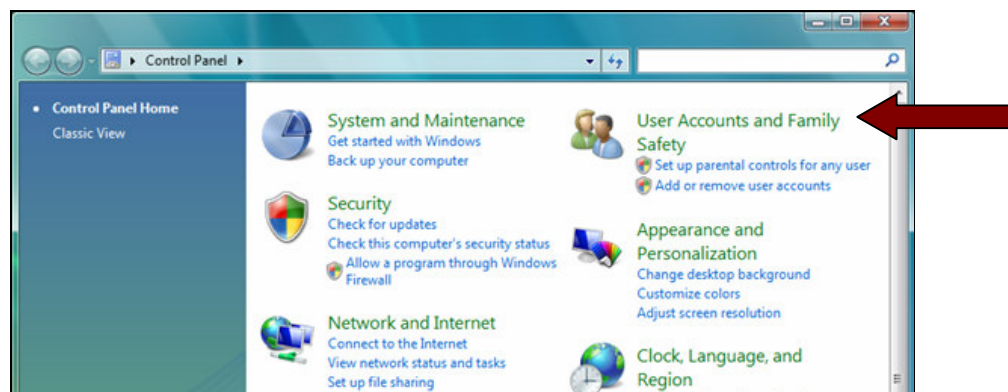
The User Accounts Control (UAC) must be turned off to allow the installation of the OPTI software.

The following steps detail the process to turn off the User Accounts Control:

In the Start Menu select the Control Panel:



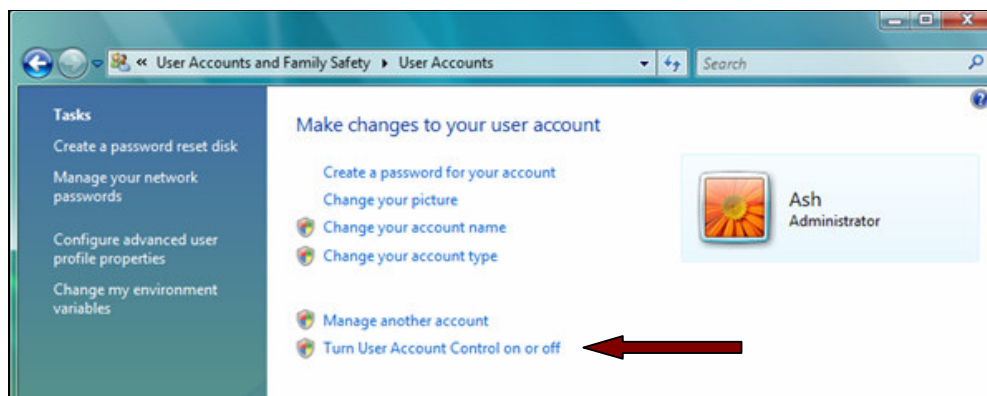
The Control Panel will open and be displayed as follows:



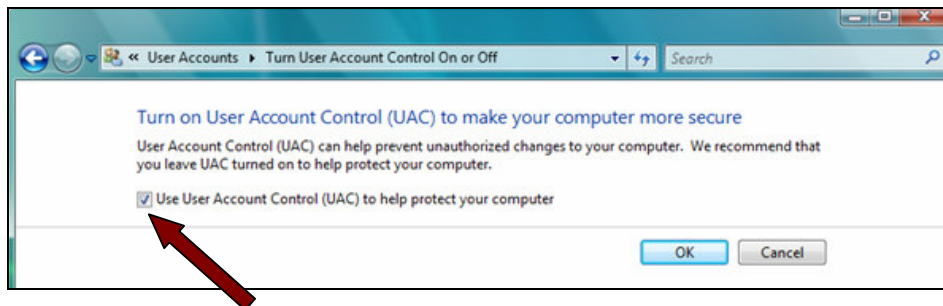
Double Click on "User Accounts and Family Safety" to open the following window:



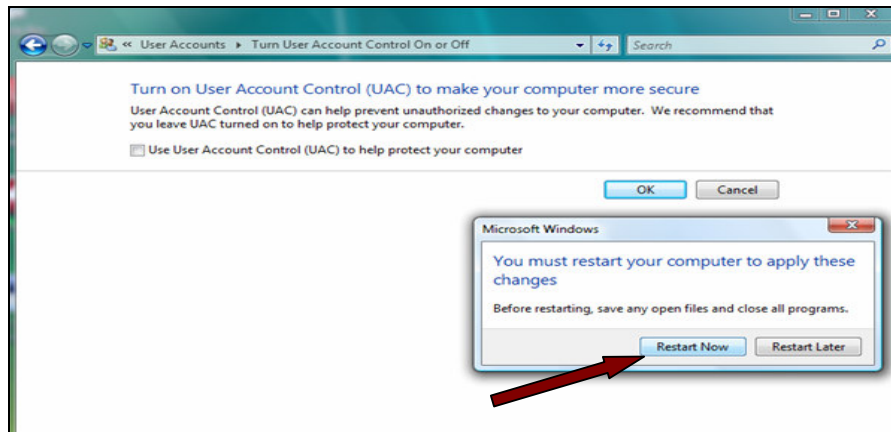
Double Click on "User Accounts" to display the following window:



Double Click on "Turn User Account Control on or off" and the following window will appear:



Uncheck the box beside "Use User Account Control (UAC) to help protect your computer". Then press OK to get the following window:

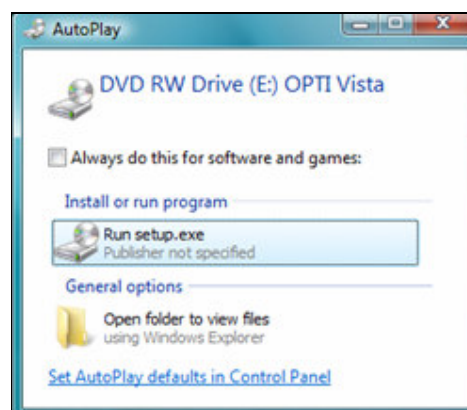


Press "Restart Now" and the computer will restart and the User Account Control will be turned off.

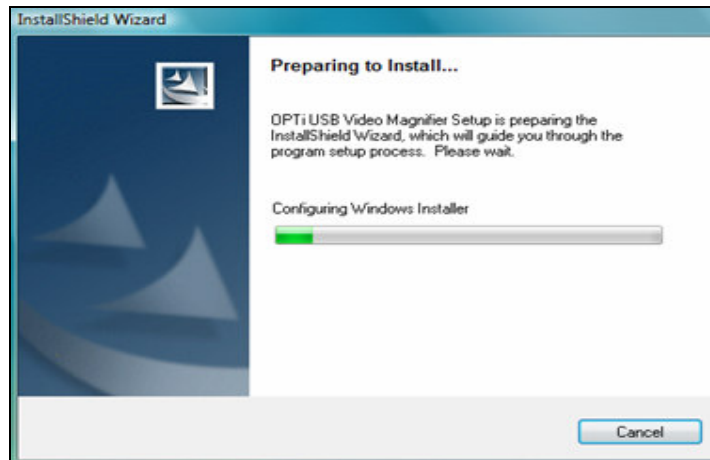
Starting the OPTI Installation

Unpack the OPTi Vista Installation CD and insert into your CDROM/DVD drive.

After a few seconds an AutoPlay window will appear. Press the "Run setup.exe" button (shown in following window):



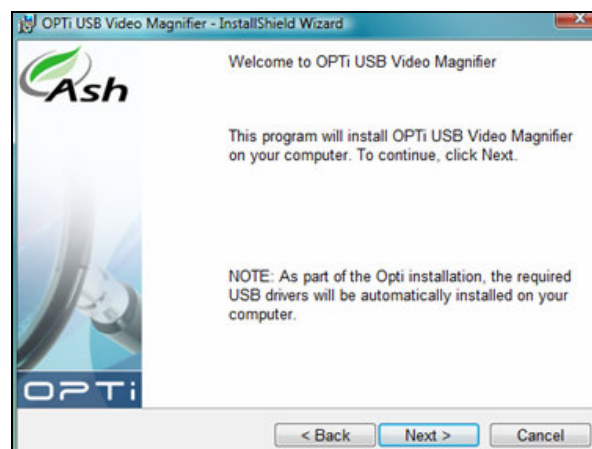
Once the installer has begun the following window will appear:



The Main Install window appears next and requires the user to press "Next" to continue installation:



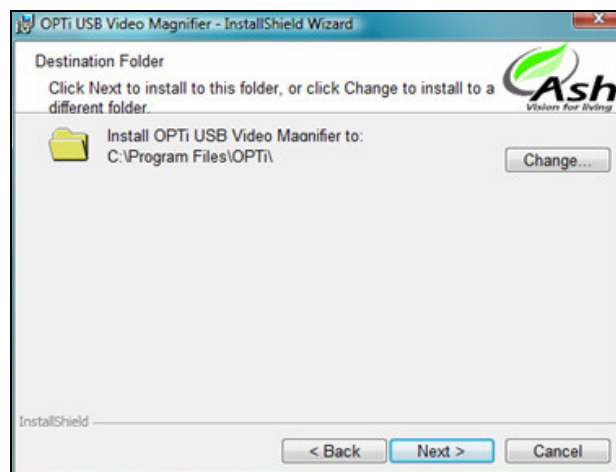
Again the user must press the "Next" button on the following window to continue installation:



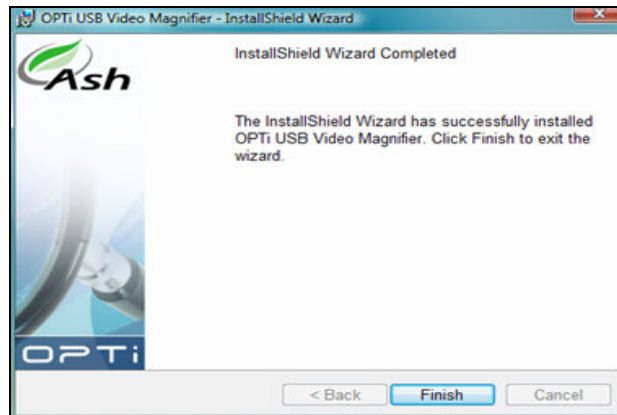
The user must accept the License Agreement displayed on the next window and click "Next" as shown:



The Installer will automatically create a folder where the OPTI software will be stored. This is the recommended location for storing the software although the user can change the location by clicking the change folder. The folder will be created after the "Next" button is pressed:



The folder will be created after the "Next" button is pressed. When installation is complete click the "Finish" button to complete the OPTI software installation:



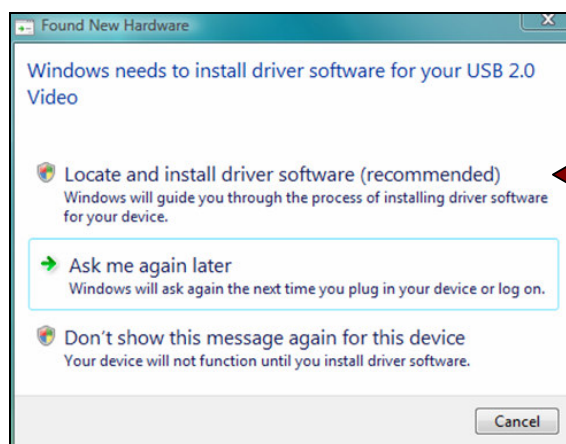
The computer will ask to restart the system. Click "Yes":



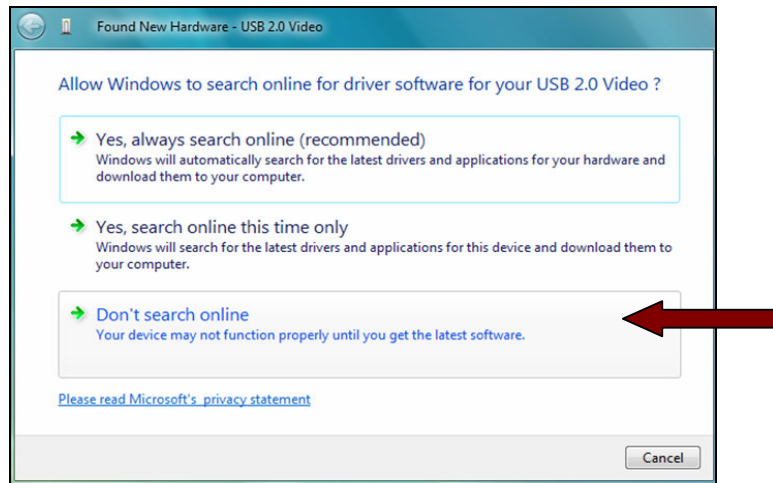
Installing the Hardware Unit

Upon system restart, plug the Opti USB device into the computer.

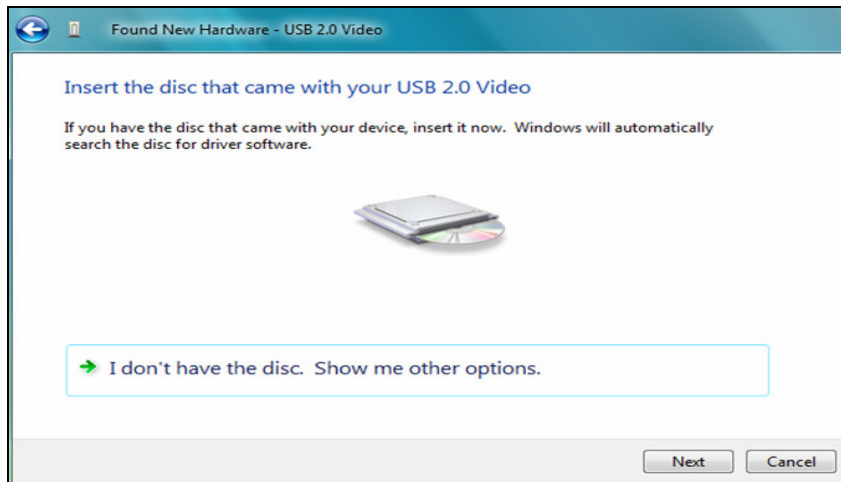
The following window will appear:



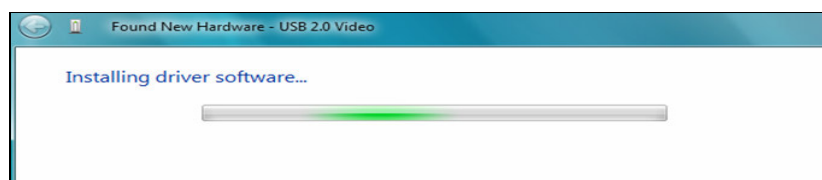
Click on "Locate and install driver software (recommended)" which will bring up the following window:



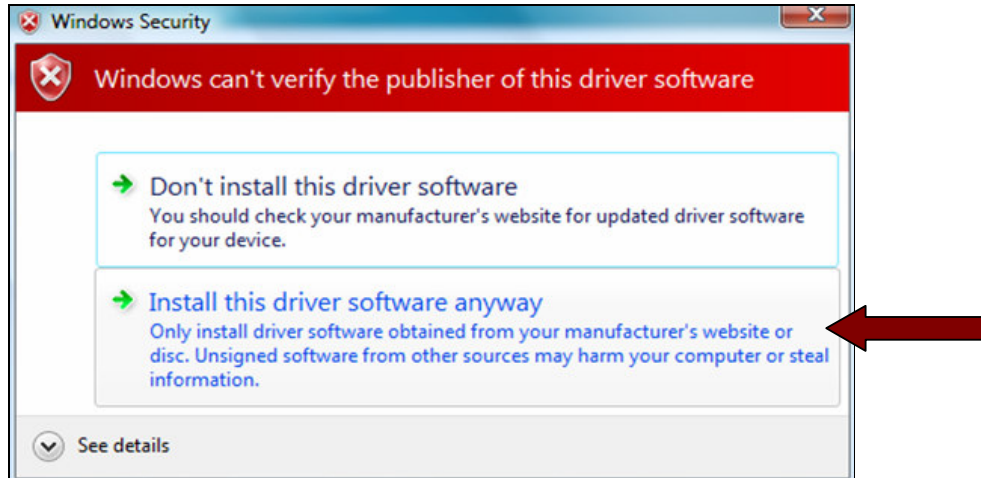
Click on "Don't search online" and the following window will appear:



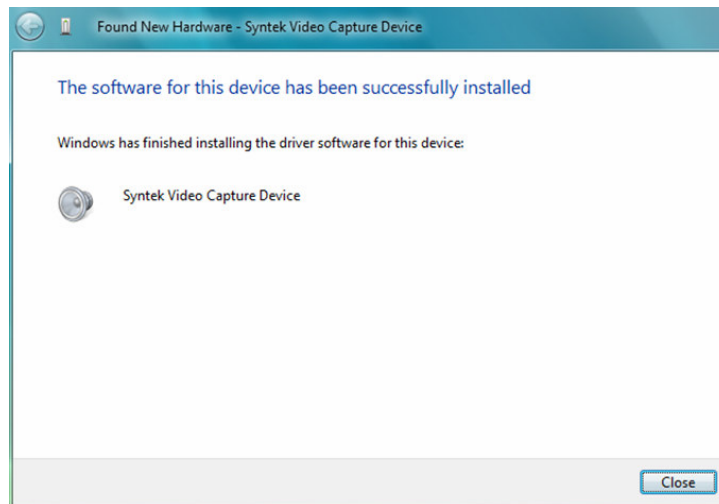
If you have left the Install CD in the computer Click "Next". Otherwise put the CD back into the CD Drive and the software will automatically install as shown:



A Security Window will ask if you want to install the driver software. Click on "Install this driver software anyway".



Installation will now be completed:



The OPTI will now be ready to use and the OPTI application icon should be displayed on the desktop.