

OPTi Tutorial

Using OPTi and Supernova

The purpose of this tutorial is to illustrate the features available when using OPTi and Supernova together. This tutorial is only applicable to OPTi Version 1.1 and above and Lunar/Supernova Version 7.01 and above.

It is advisable to have the OPTi user guide with the section titled **OPTi and Screen Magnification software** open. This tutorial will refer to it. It is also advisable to have your Quick reference guide at hand too.

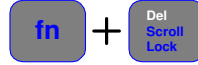
Getting started

There are several keyboard keys that are critical to operating OPTi with screen magnification. These are the arrow keys, the Page Up and Down keys and the Scroll Lock key.

The Scroll lock key



OR



A NOTE ON SCROLL LOCK

On a standard PC keyboard the scroll lock button is generally located on the top right of the keyboard beside.

On a laptop keyboard the scroll lock key is located on the top right corner of the keyboard, it is marked as 'Del'. However this is a dual use key. If you simply press this key it will perform the delete function, it will not activate the scroll lock. Instead you must press the 'Fn' key and the scroll lock/Del key to get the scroll lock action. The 'Fn' key is located on the bottom left of the laptop keyboard. So to activate scroll lock on a laptop you press **Fn + Scroll Lock**

The function of the scroll lock key is to bring OPTi to the front. What this means is that when you press Scroll lock you will either bring OPTi to the front or send it to the back. OPTi will emit a sound to indicate this has happened. Refer to the section titled **OPTi Sounds** in the user guide for more on sounds.

What does that mean?

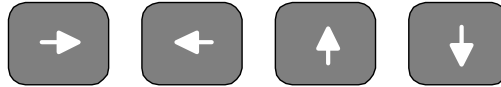
When OPTi is at the front – or active, the keyboard keys will carry out the functions that are listed on the quick reference guide and in the user manual. When OPTi is at the back, the keyboard carries out the functions of whatever other program you are running.



Page Up and Page Down

The Page Up and Page Down keys are used to navigate through the six different video split modes that OPTi can operate in when running with screen magnification on. The page up key cycles through the modes in a clockwise fashion and the page down key cycles through these modes in a counter clockwise fashion. Refer to the section titled '**Navigating between split modes**' in the OPTi user guide for a graphic of how this works.

Left/Right/Up/Down arrow



These keys allow you to control the size and position of the various split modes.

Using OPTi

Start Supernova. When this is up and running select the screen magnification level you desire from the Supernova control panel.

Now start OPTi. There are a few points of interest to note. You will see the OPTi video window flash onto the screen and then disappear. This is normal. OPTi has to reconfigure itself to operate with screen magnification on. Finally the OPTi video will appear on the desktop. One other thing to note at this point is that the toolbar has disappeared. This is normal for screen magnification mode.

The video will appear in one of six locations, or splits on the screen. If this is the first time you are running OPTi it will appear in the floating window split.

It is also important to note that semi-colours are defaulted to off in screen magnification mode. To turn these back on refer to the section titled '**Semi Colours**' in the user guide. It is recommended that these are left off unless you are running OPTi on a particularly powerful computer as the image may lag.

Floating split mode

If you press any of the arrow keys or page up/down you will get no response, this is because once OPTi starts it puts itself to the back. In order to control OPTi from the keyboard you will have to press scroll lock to make OPTi the active program.

Now by pressing the left or right arrow you can resize the image horizontally. By pressing the up/down arrow keys you can resize the image vertically. If you wish to move the image around the screen, do this by holding down the SHIFT key and pressing any one of the arrow keys. If you wish to save that position into the views manager, you press Ctrl+Alt+0 to save to view 0, Ctrl+Alt+1 to save to view 1 and so on up to 9

Note that in screen magnification mode there is a maximum size the floating window can be.

You will also notice that the computer mouse can not go over the video window. This is normal and is due to the way OPTi and the screen magnification software work together.

If you want to quickly cycle through the available views in floating split mode you can do this by pressing **Ctrl+V**. You can also change views from the main menu. To do this press **Ctrl+M**, the file menu will appear, then select views and make your selection. There are ten views in total.



OPTi STANDARD TIP

A good idea for configuring the mouse buttons for screen magnification mode is to set one button - say the left button to '**B**', i.e. to cycle POS/NEG/PHOTO mode, and the right button, to '**Z**', i.e. 'Switch to OPTi and back'.

This means that pressing the right button is the same as pressing scroll lock on the keyboard.



OPTi LITE TIP

A good idea for configuring the control panel buttons for screen magnification mode is to set one button - say the * button to '**B**', i.e. to cycle POS/NEG/PHOTO mode, and the # button, to '**Z**', i.e. 'Switch to OPTi and back'.

This means that pressing the # button is the same as pressing scroll lock on the keyboard.

Full Screen mode

To go to full screen mode from floating split mode, make sure OPTi is active and then press the Page Up button. There will be a delay of approximately 5 seconds before the OPTi image reappears this time covering the entire screen.

Things to notes here are that Semi Colours are available in this mode. The image is not resizable and cannot be moved. If you wish to access any of OPTi's menus, simply press Ctrl+M on the keyboard and the menu will appear. If you wish to view the desktop press Scroll-Lock and it will appear in place of the OPTi video. To bring back the OPTi image press Scroll-Lock again.

Top horizontal split mode

To go to this mode from full screen mode, make sure OPTi is active –i.e. OPTi image on the screen, then press Page Up again. There will be another delay

of approximately 5 seconds before the image appears. When it does the image will occupy a region across the top of the display.

You can resize the top split using the up or down arrow keys. There is a maximum size that this split window can be. You will have to press scroll lock to make OPTi active in order for the keys to respond.



OPTi TIP

If you press the right or left arrow key in top split mode the video will occupy all or a portion of the split. This feature is designed to allow OPTi to operate smoothly on computers that have less RAM or are running many applications along with OPTi and screen magnification. When the video is compressed it uses less of the PC's resources to display the image.

This feature is available in top/bottom/left/right split modes

Right vertical split mode

To go to this mode from top split mode, press the page up button again. This time there will be little or no delay before the image appears in a split window to the right side of the screen. You can resize this screen using the arrows keys. In this case the left and right arrow will resize the split window. There is also maximum size this window can be.

As with the top split you can compress the video, this time by using the up and down arrow keys.

Bottom horizontal split mode

To go from right split to bottom split mode, press the page up button once more. The image will appear on the bottom of the screen. It can be resized using the arrow keys in the same way as the top split mode.

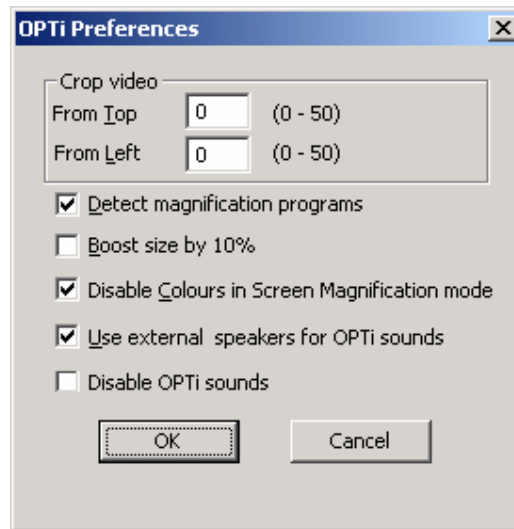
Left vertical split mode

To go from bottom split to left split mode again press page up. the image will appear on the left of the screen and operates exactly the same as the right split mode.

If you press page up once more you will be back to the floating split mode. The page down key also cycles through the split modes, in the reverse order to page up.

Enabling Semi Colours

To enable semi colours in screen magnification mode, navigate to the 'Advanced' menu inside the preferences dialog box. This is illustrated below.



To enable semi colours, uncheck the '*Disable Colours in Screen Magnification mode*' checkbox and press OK. When you do this, OPTi will have to restart itself. While this happens OPTi video will disappear from the screen. Once OPTi has restarted in semi-colour mode the image will reappear with semi-colours enabled.

This only affects top/bottom/left/right/floating split modes. It has no bearing on the full screen mode and does not have any effect when OPTi is running by itself with no screen magnification.